



BEIJING QME CONSULTING Co., Ltd
www.qiminer.com

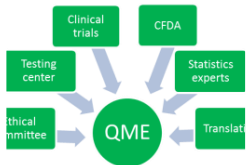
**Only use in QME.
No distribute without permission.**



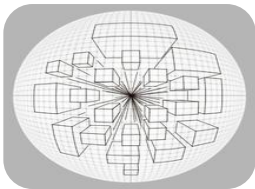
A professional company for registration and clinical trial of medical devices



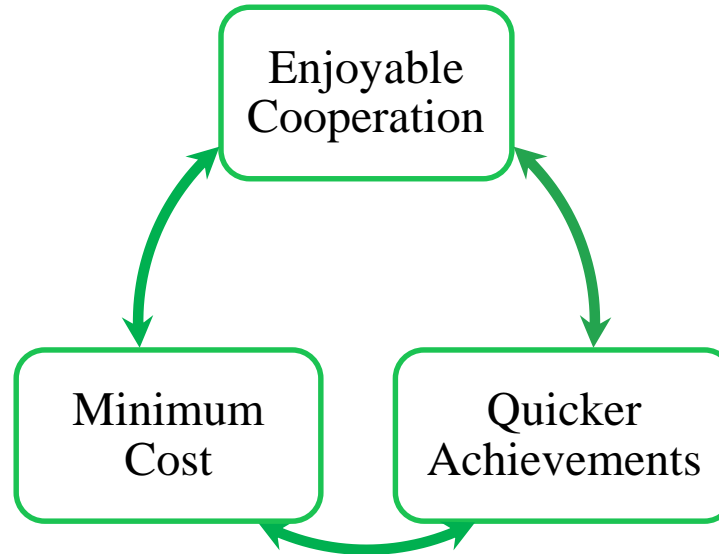
Found in 2004, hundreds of clients all over the world, 2000 certificates, the industry leader



One-stop service



Quest for Perfection, **M**anaging Power, **E**xpertise & experience



Quest for Perfection

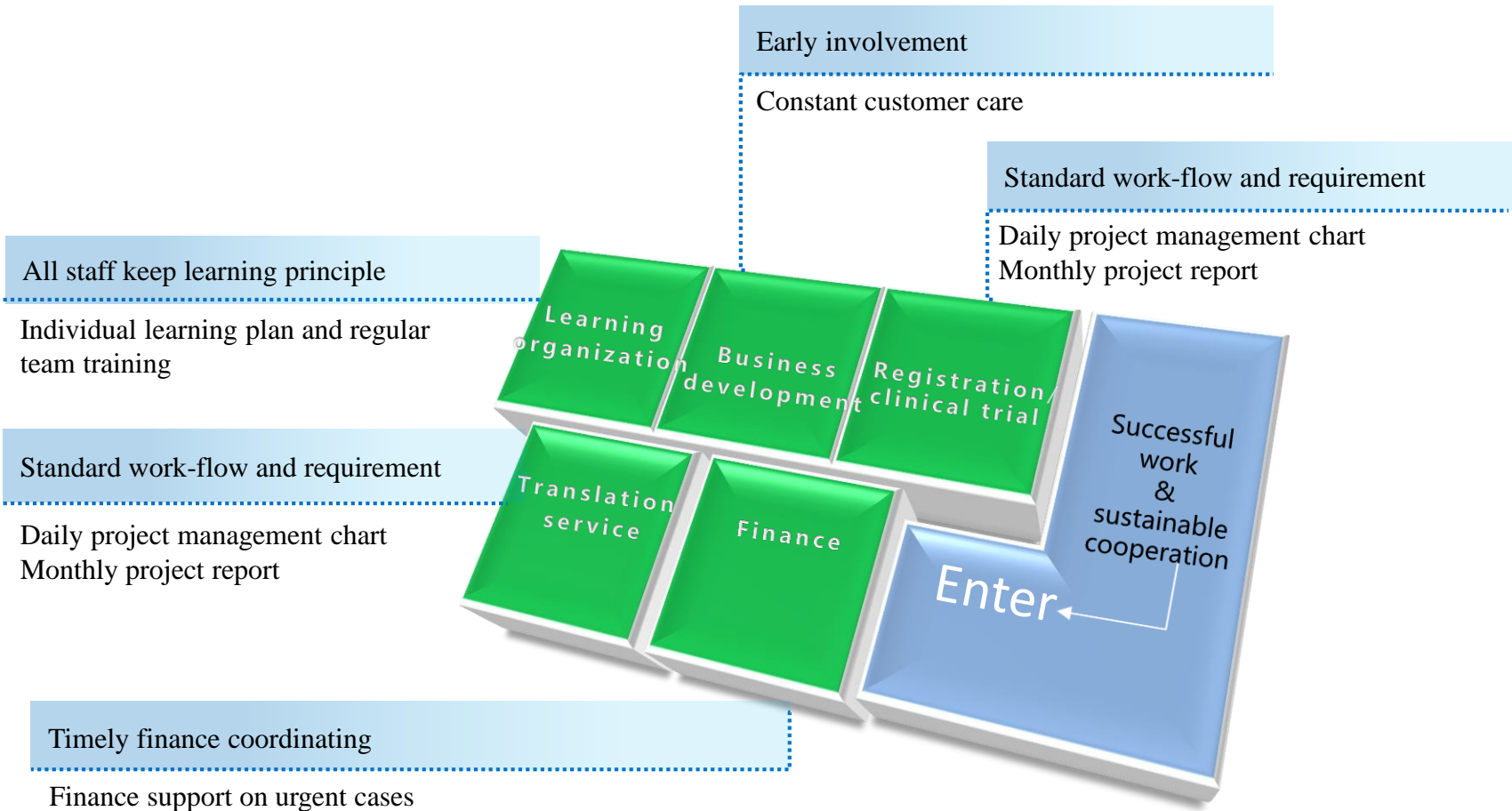
- Detail-oriented services
- Optimized solution

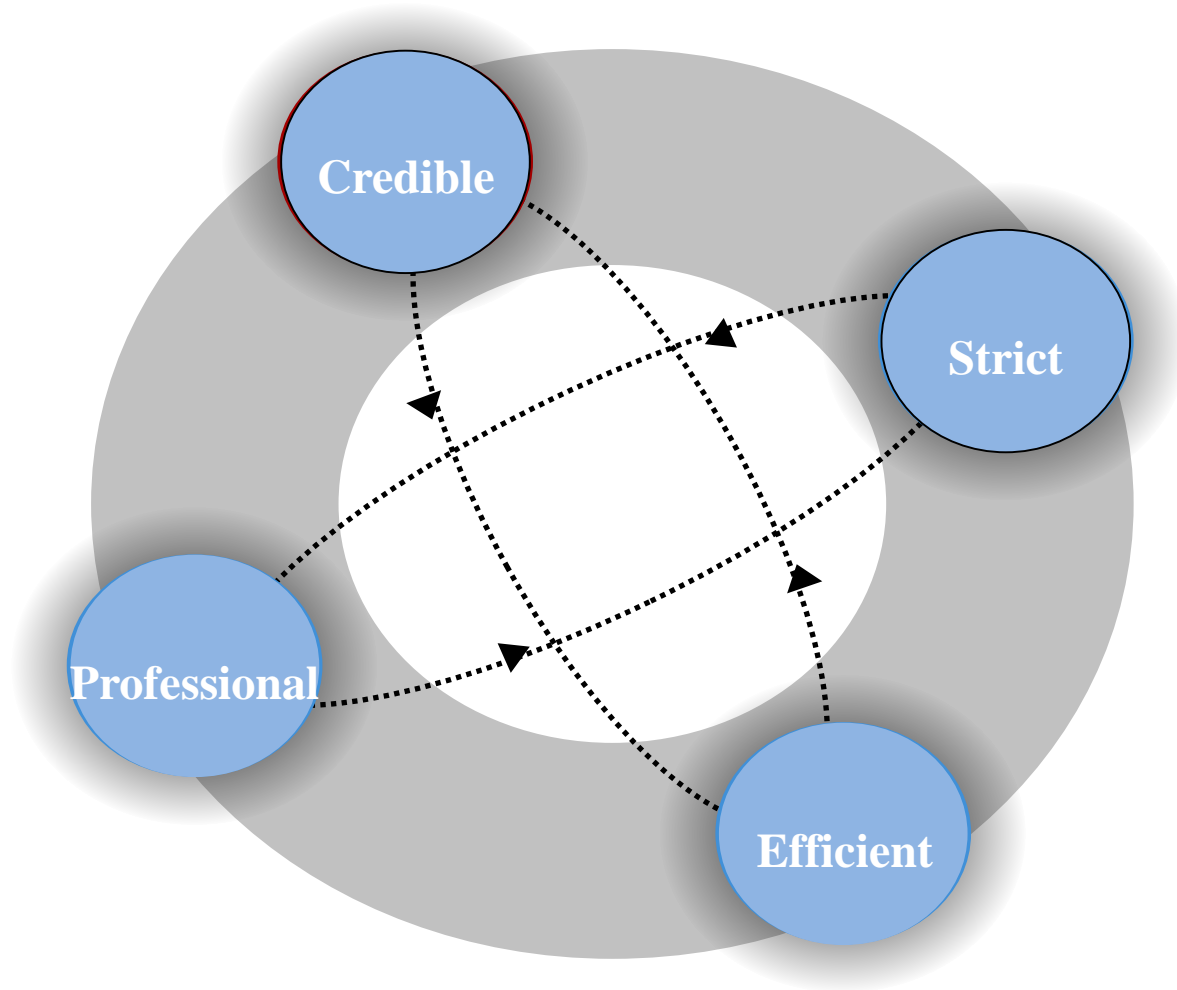
Managing Power

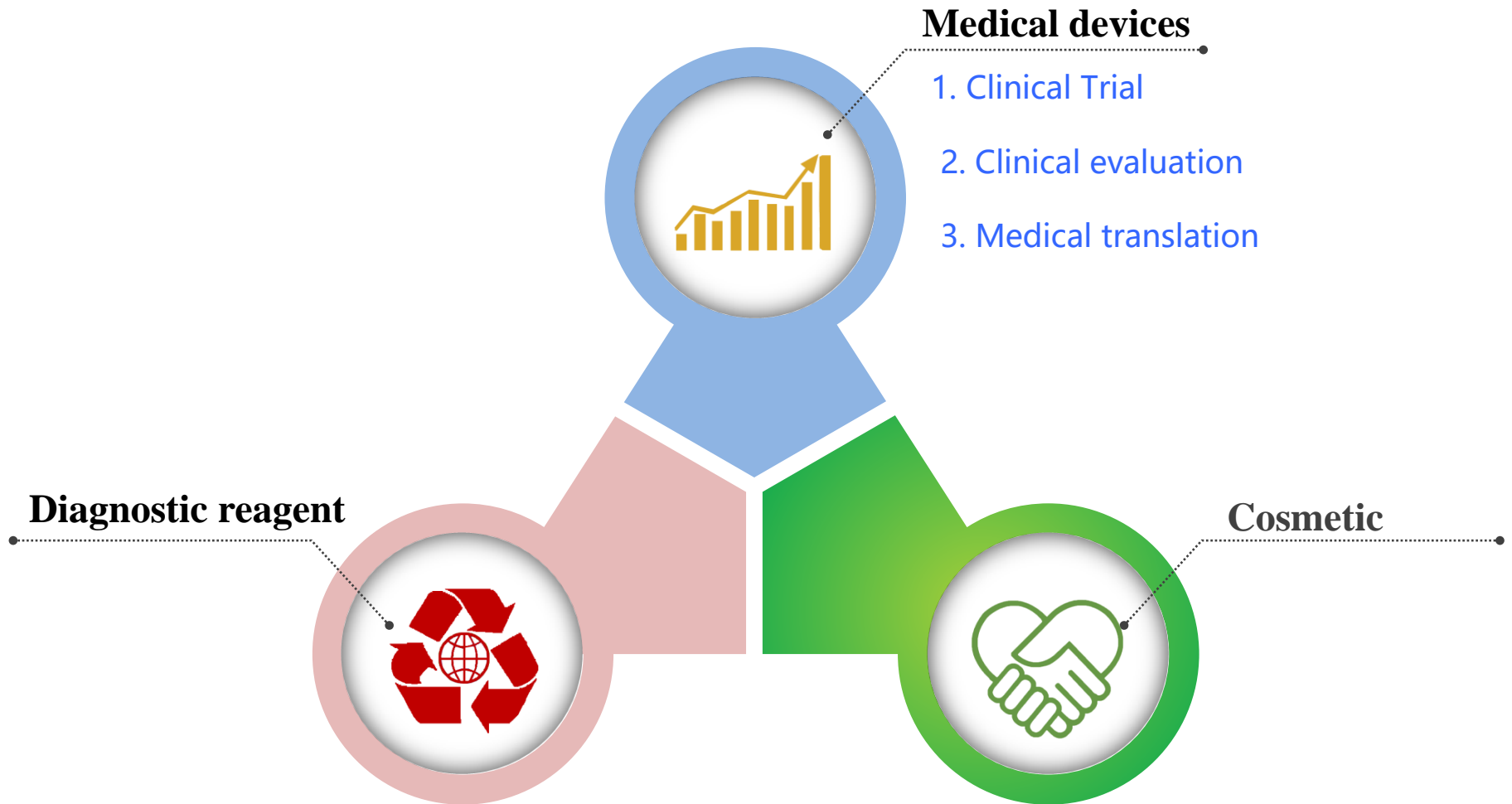
- Standard work flow
- Tight project management

Expertise & experience

- Rich knowledge on medical devices
- Thorough mastery of regulations







USA

Henry Schein, Ultradent, Zimmer, Argen, Colgate Oral, Patterson, Implantech Associates, Pulpdent, Dentsply, Ora Tech, Sheldon...

Europe

Nobel Biocare, Bego, Jota AG, Mathys, SIC invent AG, Ivoclar Vivadent, VITA, Bredent, Adentatec, Coltène/Whaledent, ALTATEC, VDW, VOCO, W&H. Dentaaurum, DMG...

Korea

Shinhung, B&L Biotech, META BIOMED, SAEYANG, Biomaterial, BioSpine, DXM, Seashin, HUBIT, SPIDENT, Surgident, SOLCO, C-K DENTAL...

Japan

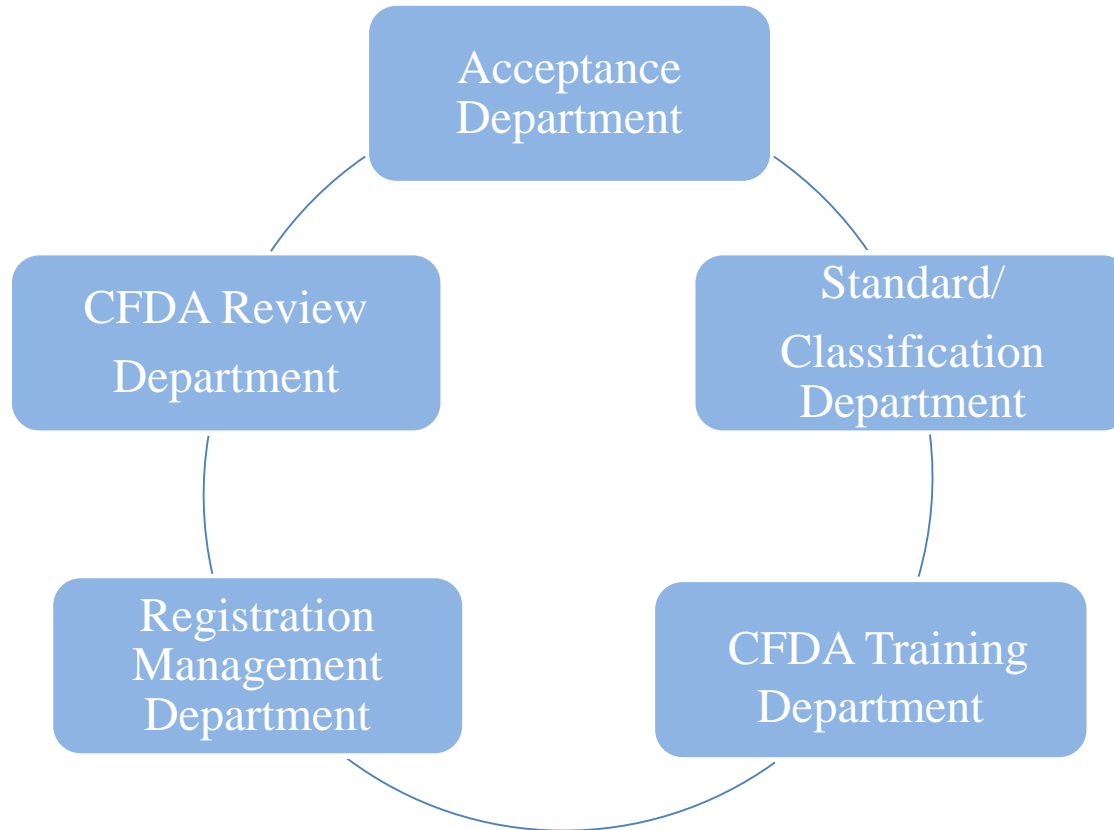
Kuraray, Shofu, GC Dental, KONO SEISAKUSHO, MANI, GunZe, Tokuyama, Ruby, Morita...

Taiwan

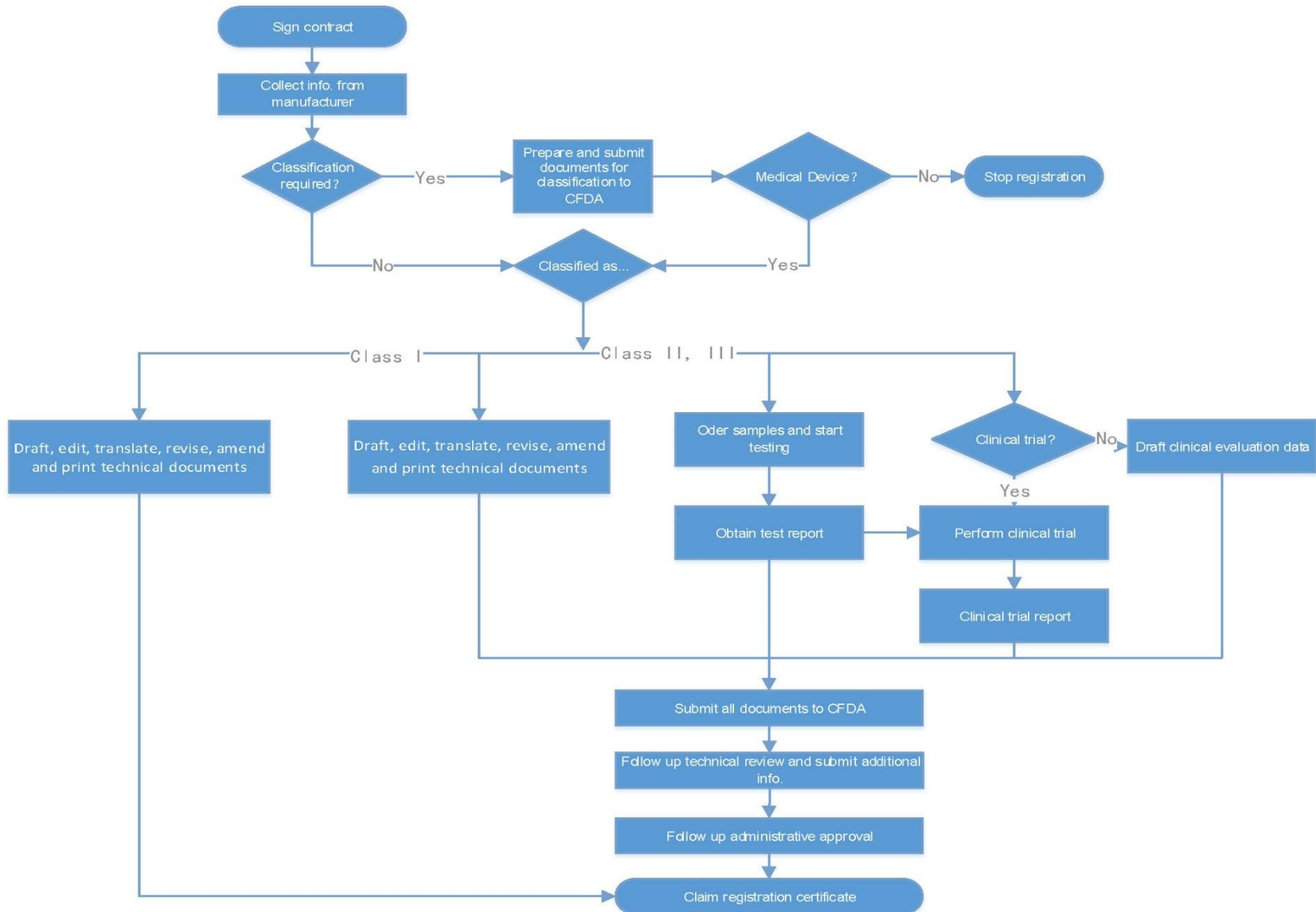
Medifun, Intai, Codent, ROLENCE, Alliance, SHINING WORLD, Shinmed, TTbio, Baso, Apoza, ENTER MEDICAL, SHARPGUN, Quen Lin...

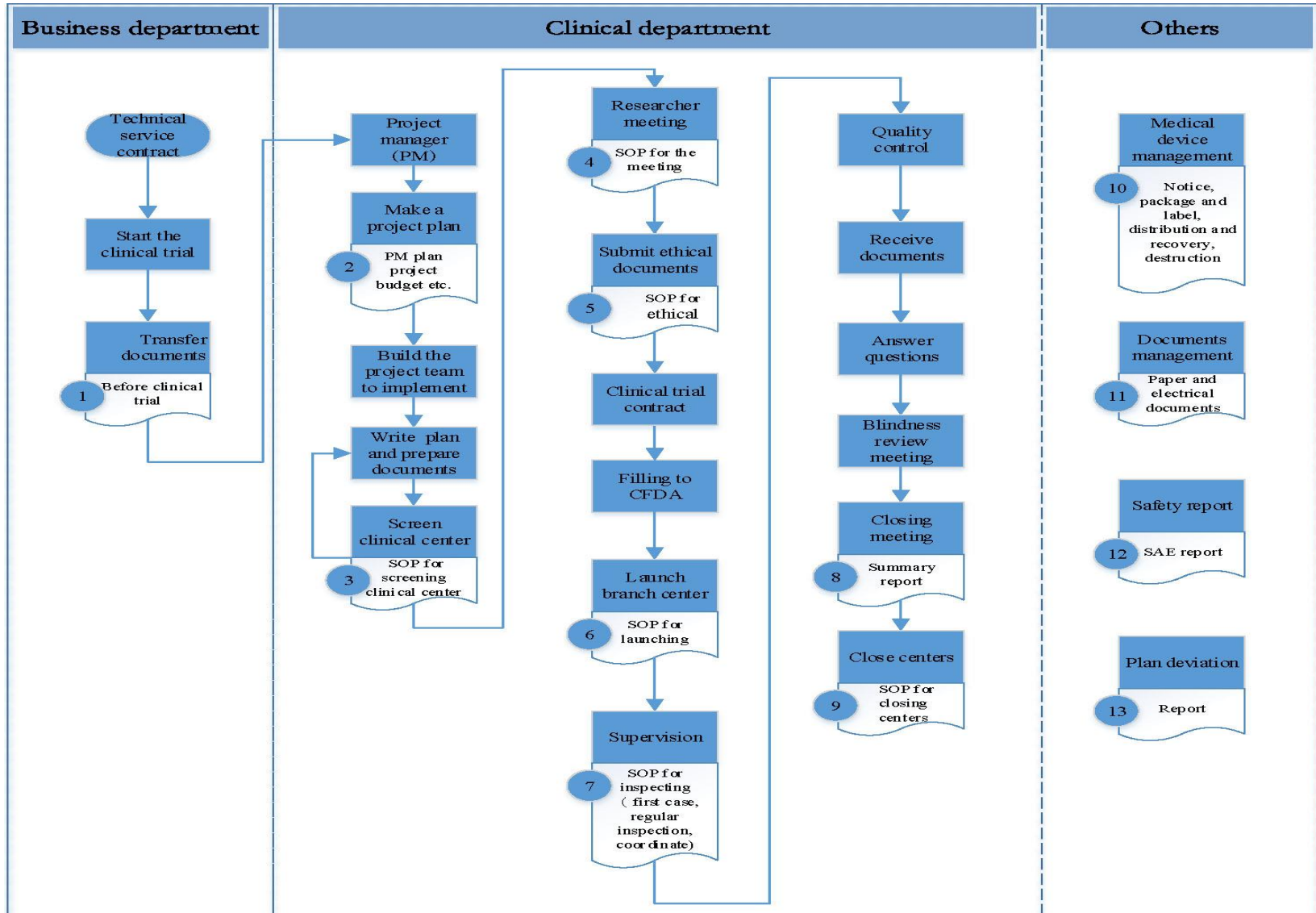
Other countries

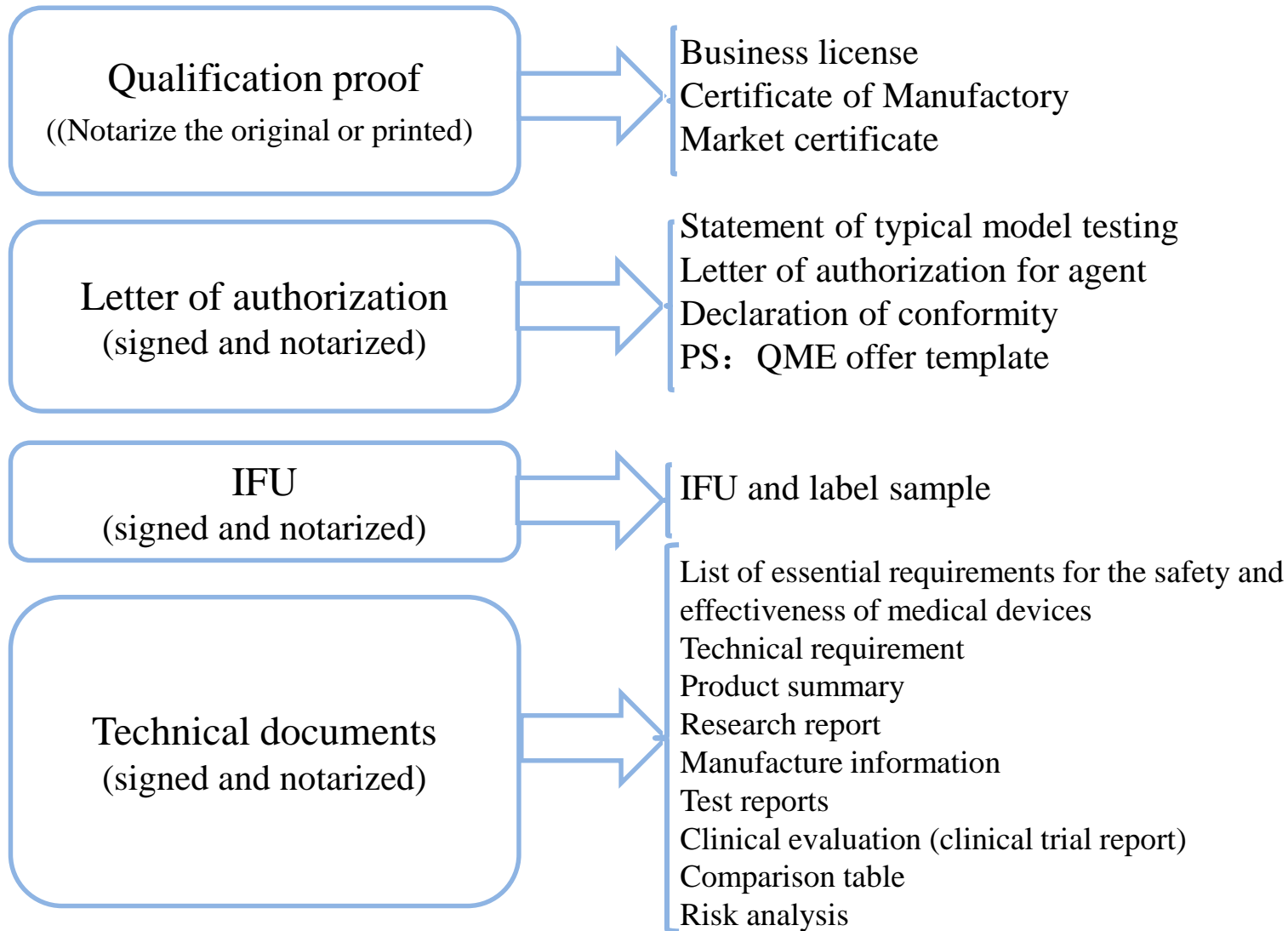
Top Glove, Koonseng, Sanctuary Health, Oon Corp, SDI, Alpha-Bio, SABMED, Strauss & Co. Industrial, Talia, DB Orthodontics, TALLADIUM, Nipponeka...



Registration Flow Chart







Contact Us



BEIJING QME CONSULTING Co., Ltd.

Add: C-602,RuiPu Building, No.15,Hongjunying South Road,
Chaoyang District, Beijing, China.

Tel: 010-64187881

Fax: 010-62270562

Email: service@qiminer.com

Web: www.qiminer.com